

KARIBAN

REFERENCE : K479

SIZES : XS_S_M_L_XL_XXL_3XL_4XL

COMPOSITION :

Main fabric : Brushed cotton / polyester fleece 80/20 - 280 80% cotton / 20%polyester

Fabric 1 : Cotton single jersey (32/1) - 180 For tone on tone hood lining 100%cotton

WEIGHT :

Main fabric : 280 gsm

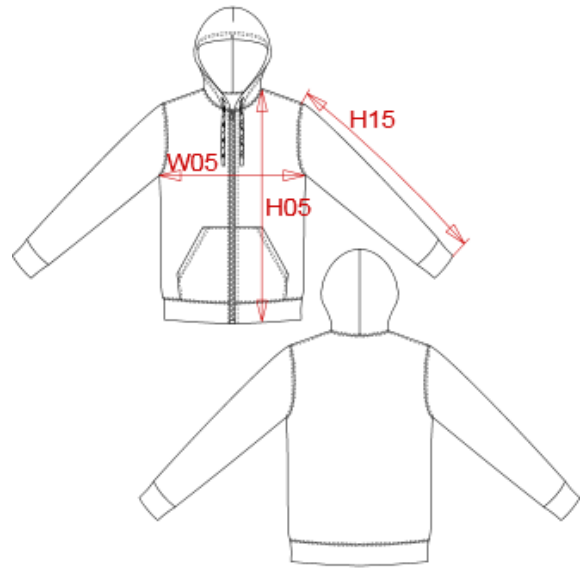
Fabric 1 : 180 gsm

FABRIC CONSTRUCTION AND FINISHING :

Tubular

ARTICLE WEIGHT :

516 gr/pc



DESCRIPTION										
Français : Sweat-shirt zippé capuche										
English : Full zip hoodie										
Nederlands : Sweater met rits en capuchon										
Deutsch : Kapuzensweatshirt mit Zip										
Español : Sudadera con capucha y cremallera										
Italiano : Felpa con cappuccio e zip										
Português : Sweatshirt com capuz e fecho										

COLORS	PANTONE SERIGRAPHIE
White	White
Black	Black
Navy	296C
Dark grey	432C
Oxford grey	-
Red	200C
Light royal blue	7685C
Yellow	1225C
Orange	1585C
Forest green	5605C

MEASUREMENT										
Description	XS	S	M	L	XL	2XL	3XL	4XL		
H05 Hauteur totale avec BC / Total height with rib	64	66	68	70	72	74	76,75	78,80		
W05 1/2 largeur poitrine / 1/2 chest width	49	52	55	58	61	64	68	71		
H15 Longueur manche avec BC / Sleeve length with rib	57	59	61	63	65	67	69	70,80		

CARE LABEL				

PACKING	
Box	20 pcs / box XS-S => L:58.1cm W:37.8cm H:32cm GW:10.20kg NW:8.80kg M-XXL => L:58.1cm W:37.8cm H:42cm GW:12.25kg NW:10.60kg 3XL-4XL => L:58.1cm W:37.8cm H:54cm GW:13.45kg NW:11.80kg