

PROACT.®

REFERENCE : PA482

SIZES : S_M_L_XL_XXL_3XL

COMPOSITION :

Main fabric : Polyester Cool Plus / Polyester interlock 50/50 - 145 50%polyester 'Cool Plus' / 50%polyester

WEIGHT :

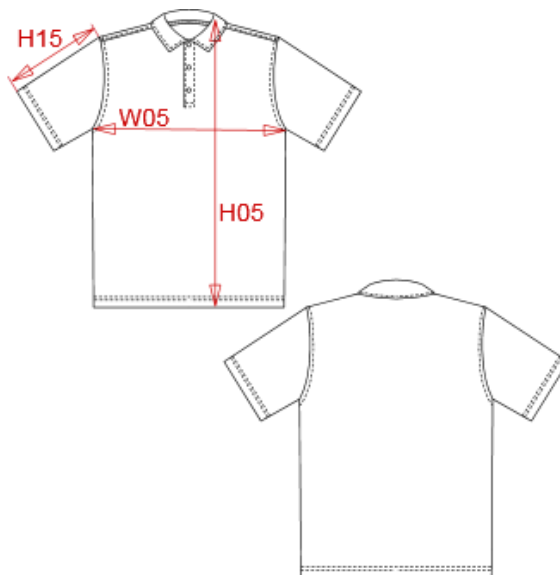
Main fabric : 145 gsm

FABRIC CONSTRUCTION AND FINISHING :

Moisture control fabric

ARTICLE WEIGHT :

164gr/pc



DESCRIPTION	
Français :	Polo respirant à séchage rapide
English :	Performance polo
Nederlands :	Ademende en sneldrogende polo
Deutsch :	Schnell Trockendes-Atmungsaktives Polohemd
Español :	Polo transpirable de secado rapido
Italiano :	Polo asciugatura rapida
Português :	Polo de homen de desporto

COLORS	PANTONE SERIGRAPHIE
White	White
Red	200C
Black	Black
Navy	296C
Aqua blue	7690C
Lime	367C
Orange	1585C
Fine grey	Cool gray 7C
True Yellow	116C

MEASUREMENT							
Description	S	M	L	XL	XXL	3XL	
H05 Hauteur totale/total height	68,70	70,70	72,70	74,70	77,45	80,20	
W05 1/2 largeur poitrine/1/2 chest width	48,50	51,50	54,50	57,50	61,50	65,50	
H15 Longueur dessus de manche / sleeve length	21,35	22,35	23,35	24,35	25,85	27,35	

CARE LABEL				

PACKING	
Box	25 pcs / box S => L:56cm W:39cm H:16cm GW:5.30kg NW:3.80kg M => L:56cm W:39cm H:16cm GW:5.60kg NW:4.10kg L => L:56cm W:39cm H:16cm GW:5.70kg NW:4.20kg XL => L:62cm W:39cm H:18cm GW:6.20kg NW:4.50kg XXL => L:62cm W:39cm H:18cm GW:6.60kg NW:4.90kg 3XL => L:62cm W:39cm H:18cm GW:6.80kg NW:5.10kg